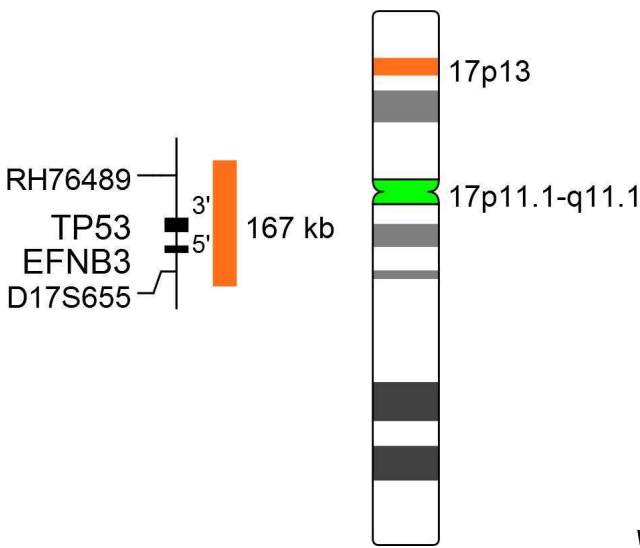


XL TP53/17cen

Deletion Probe, Ref. No. D-5103-100-OG

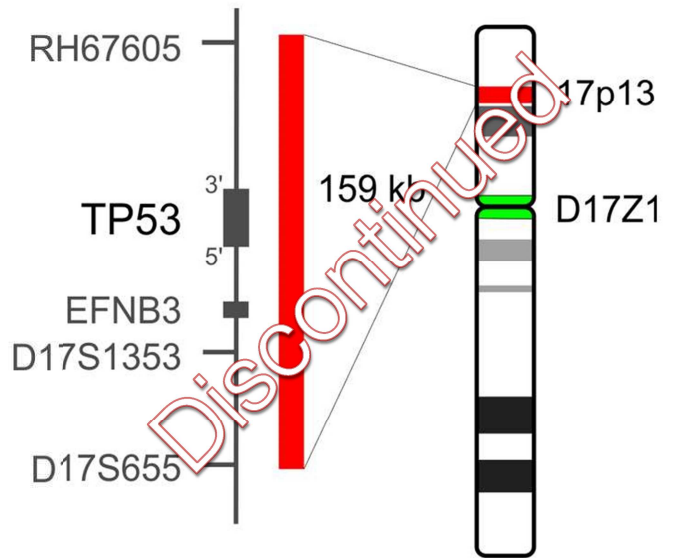
We are introducing the XL TP53/17cen probe which is replacing XL P53 D-5017-100-OG. Like its predecessor, XL TP53/17cen detects deletions occurring in 17p13 involving the TP53 locus. The specific probe is labeled in orange while a green labeled probe hybridizing to the centromere of chromosome 17 functions as a reference probe.

TP53 has many mechanisms of anticancer function, and plays a role in apoptosis, genomic stability, and inhibition of angiogenesis. If the TP53 gene is damaged, tumor suppression is severely reduced. More than 50 % of human tumors are associated with loss of TP53 function.



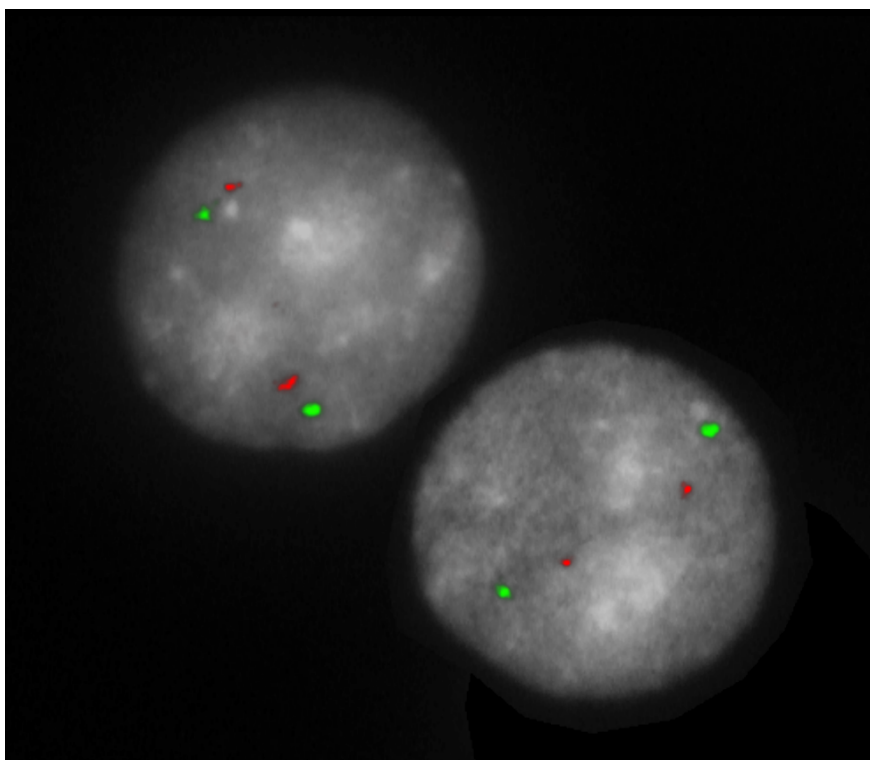
v10.1

XL TP53/17cen
D-5103-100-OG



XL P53
D-5017-100-OG

FACT SHEET



XL TP53/17cen hybridized to lymphocytes. Two normal interphases are shown.

Summary

Clinical Applications:

- CLL, CML, MM

Related Probes:

- XL P53 D-5017-100-OG *discontinued*
- XL CLL Probe Kit (DLEU/LAMP/12cen + XL ATM/TP53) D-5044-100-TC
- XL ATM/TP53 D-5046-100-OG
- XL Iso(17q) D-5048-100-OG
- XL DLEU/TP53 D-5067-100-OG
- XL TP53/NF1 D-5089-100-OG

FACT SHEET

Literature:

- Drach et al (1998) Blood 92:802-809
- Gunn et al (2008) J Mol Diagn 10:442-451
- Neben et al (2013) J Clin Oncol 31:4325-4332

FACT SHEET

