

# MetaCyte

Automated Sperm Detection for Forensic Investigations

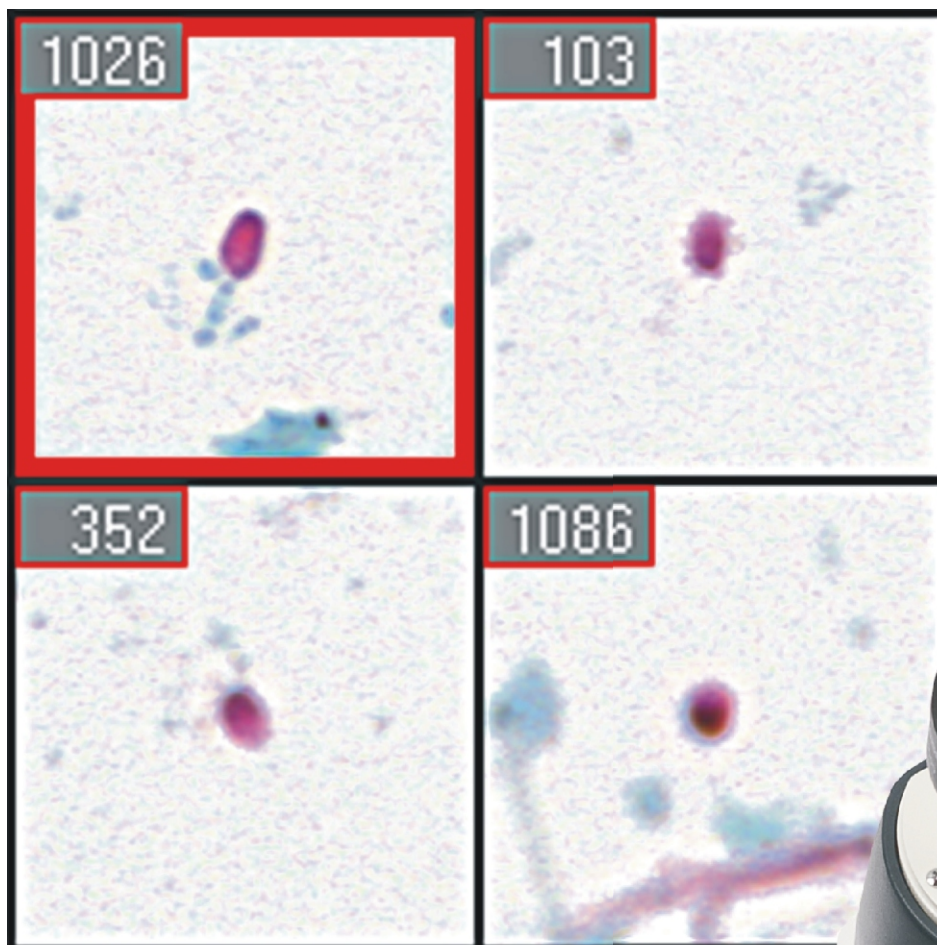
## Automated Identification of Male Cells on Samples from Victims of Sexual Assault

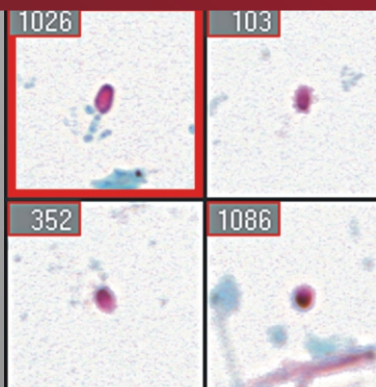
*Unattended scanning of forensic samples*

- Automated detection of sperm in samples obtained from crime scenes
- Fast and unattended scan of up to 880 slides
- Reliable identification of target cells by color and morphology ('Christmas Tree' staining)
- Comprehensive results gallery display, re-location of cells, and flexible reporting tools
- Possibility to transfer object coordinates to laser micro-dissection systems
- Species-specific sperm detection

## Reveal

*Harness MetaCyte  
to find the evidence:  
automated and  
unerring*

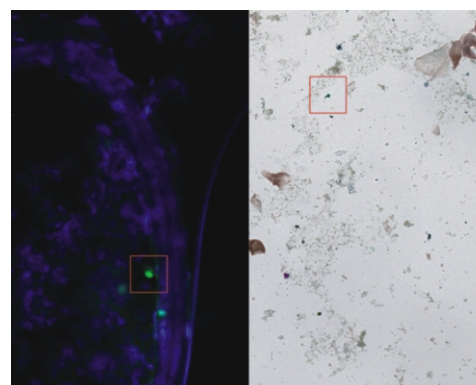




Detection of sperm in crime scene samples is an important step in the process of confirming sexual assault in cases of rape. Automated sperm detection with Metafer MetaCyte offers a fast, yet highly reliable alternative to the tedious visual sample inspection, thus improving efficiency in solving crime cases.

MetaCyte identifies target cells by morphology and color, and displays them in a comprehensive color image gallery. A mouse click re-locates positions under the microscope for visual inspection.

Up to 880 slides can be scored concurrently, and results of each sample are automatically stored together with the gallery images.



Fluorescent labeled (left) and 'Christmas Tree' (right) stained sperms, both detected by MetaCyte on a forensic sample (red frame).

MetaCyte is based on the versatile slide scanning platform Metafer, and is therefore easily upgradeable for many other applications - including scanning for fluorescently labeled targets, and the possibility to link the system with laser microdissection devices.

## MetaSystems Worldwide

MetaSystems is proud to have a worldwide network of competent business and service partners. For inquiries, please contact your local MetaSystems partner or one of the three MetaSystems offices in Germany, USA, and Hong Kong.

### MetaSystems Germany

MetaSystems GmbH  
Robert-Bosch-Str. 6  
D-68804 Altlusheim  
Germany

tel +49 6205 39610  
fax +49 6205 32270  
mail [info@metasystems.de](mailto:info@metasystems.de)  
web [www.metasystems.de](http://www.metasystems.de)

### MetaSystems USA

MetaSystems Group Inc.  
300 Bear Hill Road  
Waltham, MA 02451  
USA

tel +1 617 924 9950  
fax +1 617 924 9954  
mail [info@metasystems.org](mailto:info@metasystems.org)  
web [www.metasystems.org](http://www.metasystems.org)

### MetaSystems Asia

MetaSystems Asia Co.Ltd.  
Unit 322, 3/F, Core Bldg. 2  
No. 1 Science Park  
West Avenue  
Hong Kong Science Park  
Shatin, New Territories  
Hong Kong

tel +852 2587 8333  
fax +852 2587 8334  
mail [info@metasystems-asia.com](mailto:info@metasystems-asia.com)  
web [www.metasystems-asia.com](http://www.metasystems-asia.com)